

Property summary (id=1253-T2-087/1F)

Apartment - 2 bedrooms

✔ Pre installed/Installed AC

Loule

Price: €142,500

Useful area: 88m²

State: New

Land area: N/A

Building year:

New 2 Bedroom Apartment in Loulé with 88.26sqm.

The apartment has 2 bedrooms (1 en-suite with **hydro-massage**) with 15.95sqm and 13.60sqm, a living room with 28.10sqm and an equipped kitchen with refrigerator, slab, oven, exhauster fan, heater water, washing machine and dish washer.

In the apartment we find built-in wardrobes with drawers, sliding doors and wooden coating, pre installation for **air conditioning**, windows with **electric shutters**, video entry system and parking place. The building has 4 floors and the apartment is located on the 1st floor.

The building is just a few minutes from the main highway (A22).

History of changes

- on 2008-02-26: this property was inserted on our system.
- on 2008-02-26: the property description was updated.
- on 2008-03-12: the property description was updated.

More information

If you wish to get more information or book a visit to this property you can contact us via email to commercial@algarve-property-online.co.uk with the reference 1253-T2-087/1F or using the contact form in [this property](http://www.algarve-property-online.co.uk/property-g1253.html) page (<http://www.algarve-property-online.co.uk/property-g1253.html>).

For more information or to look for other properties in the Algarve area you can go to our main page at [Algarve Property Online](http://www.algarve-property-online.co.uk) (<http://www.algarve-property-online.co.uk>) site.

Available property fotos:



Living room



Entrance



Bedroom 1



Bedroom 1



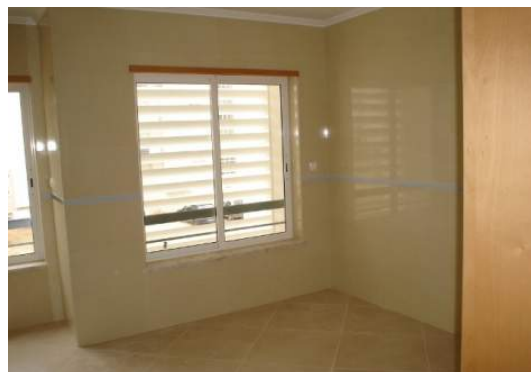
Bedroom 2



Bedroom 2



Kitchen



Kitchen

Costs with taxes

The costs that we are presenting here are just a simulation to give you an idea of the major taxes that you will have to pay while acquiring a property in Portugal, if a more accurate value is required please contact us. This simulation does not include additional mortgage costs or additional solicitor/lawyer costs. The tax on property transmission (IMT) depends on the property use, it has different figures when the property use is "Permanent Home", "Holiday Home", or a "Building Plot".

Assuming holiday home

IMT = €2.659,00

Notary (at deeds) =€222,79

Stamp duty =€1.140,00

Property registry =€400,00

Total = €4.421,79

Assuming permanent home

IMT = €1.784,00

Notary (at deeds) =€222,79

Stamp duty =€1.140,00

Property registry =€400,00

Total = €3.546,79